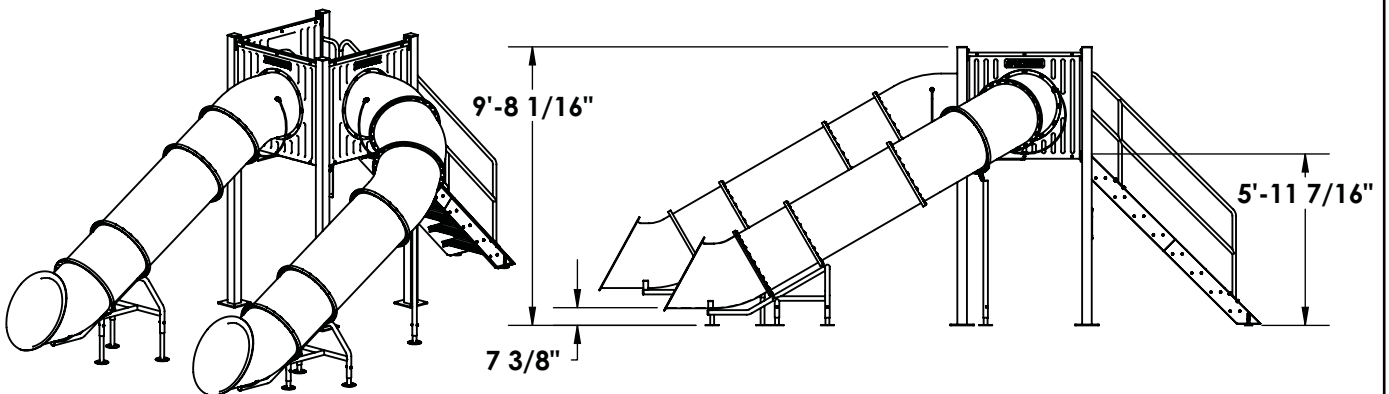
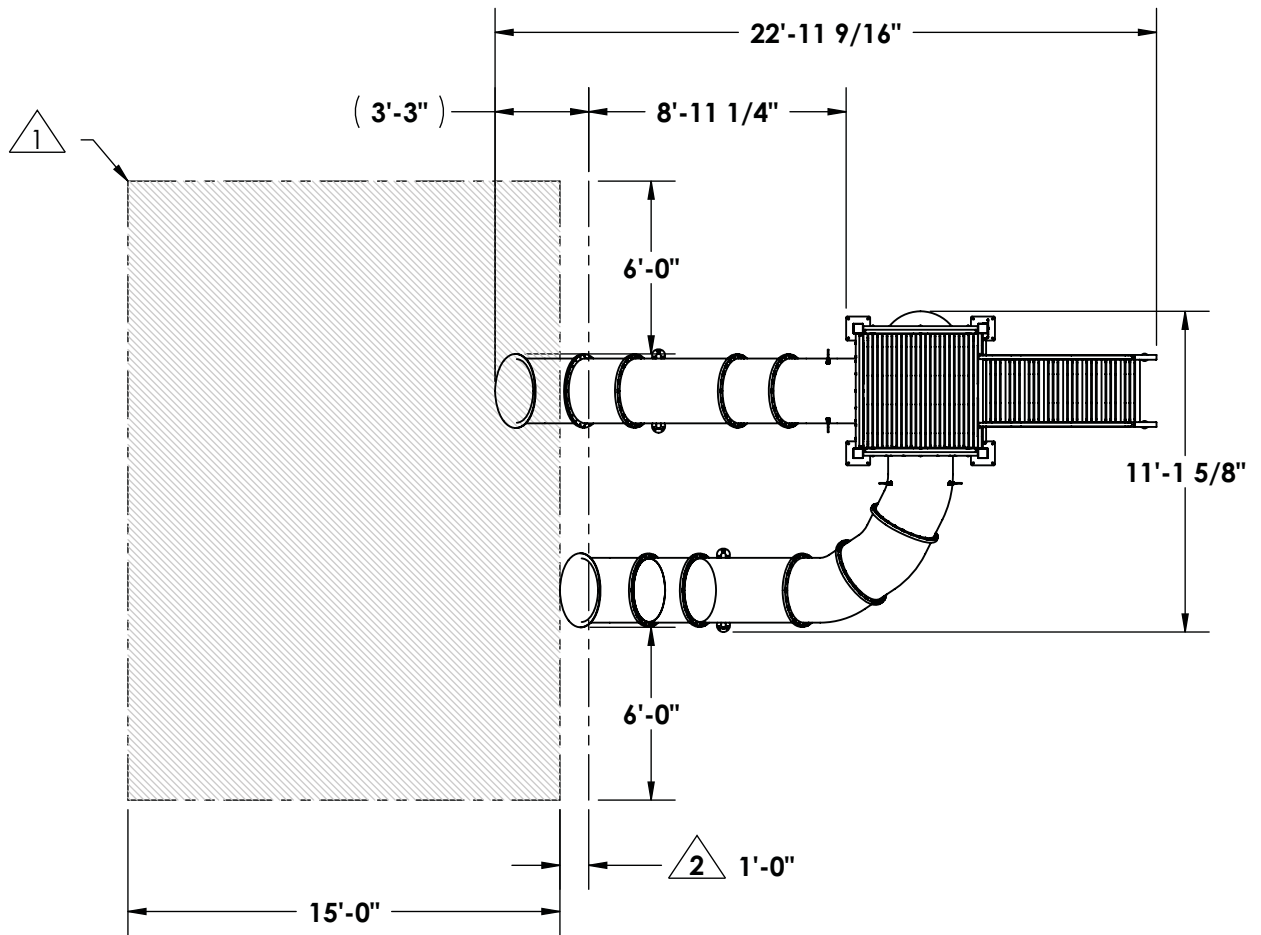


**PLAY TIME SERIES  
MODEL - TETON DOUBLE SLIDE**

NOTE:

- △1 RECOMMENDED SPLASHDOWN AREA.  
CHECK LOCAL CODE FOR SPLASHDOWN DEPTH.
- △2 RECOMMENDED OVERHANG FROM POOL WALL.



\*Note: Specifications are nominal and are subject to change.  
Please contact Spectrum Products for custom applications.

**SPECTRUM**  
Products

7100 Spectrum Lane  
Missoula, Montana 59808  
406.542.9781 \* 800.791.8056  
Fax: 406.542.1158  
www.spectrumproducts.com

**ENGINEERING DATA**

PRODUCT:	TETON DOUBLE SLIDE
PRODUCT #:	86550-00
REVISION:	A
MATERIAL:	300 SERIES STAINLESS STEEL

## **Water Slide, Teton – Double Flume, part number 86550-00**

The water slide shall be designed in accordance with ASTM F 1487-01, and CPSC Part 1207, and for use on in-ground commercial swimming pools that have a minimum water depth of 4'. All metallic components of the slide its tower, stairway, and flume supports shall be fabricated of stainless steel. Flume sections and tower side panels shall be fabricated of color-impregnated, ultraviolet stabilized polyethylene. The water slide shall be permanently mounted to the swimming pool deck.

### **Tower**

The tower support legs shall be fabricated from 4" square x 0.120" wall thickness, 300 series stainless steel. Each leg shall receive a 10" x 10" x 3/8" 300 series stainless steel four-hole flange for attachment to pool deck. Leg tops will be capped.

### **Flumes, Tower Side Panel and Observation Window**

The slide flume sections shall be 27" in diameter and shall be rotationally molded of ultraviolet stabilized polyethylene. Side panels shall be rotationally molded of ultraviolet stabilized polyethylene. Domed windows shall be supplied and installed in each side panel. The domed window shall be fabricated of molded 3/8" thick polycarbonate material. The window and attachment hardware shall be capable of withstanding an impact load of 150-pounds when dropped from an elevation of 10'.

### **Tower Platform Deck and Step Treads**

The tower platform deck and stair step treads shall be fabricated from 1" ultraviolet stabilized, non-slip, structural fiberglass T-bar.

### **Stair Assembly/Rails**

The stair assembly shall be constructed of, 2" x 8" x 0.188" wall thickness, 300 series stainless steel. Stair rails shall be fabricated from, 1.50" O.D. x 0.120" wall thickness, ASTM-A-554 grade 300 series stainless steel.

### **Flume Supports**

Flume supports shall be fabricated from, 1.90" O.D. and 1.66" O.D. x 0.109" wall thickness, 300 series stainless steel tubing. Stainless steel floor flanges shall be provided for each deck contact point. The supports shall be adjustable and shall cradle the flume assemblies, providing strength and structural support.

### **Water Supply**

The flumes' entrance will be equipped with two-spray nozzles that will direct a fine spray of water into the flumes. Water supply tubing will be installed so as not to allow patron access. A 3/4" female threaded water connection shall be supplied and shall be located at the base of the tower assembly.

### **Warranty**

Two year limited warranty.



7100 Spectrum Lane ~ Missoula, Montana 59808  
800.791.8056 ~ 406.542.9781  
Fax: 406-542-1158  
[www.spectrumproducts.com](http://www.spectrumproducts.com)