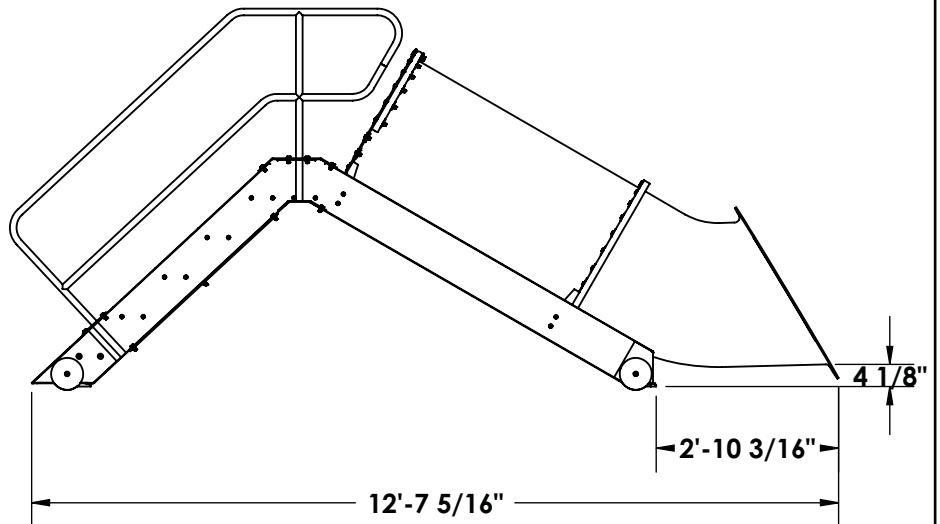
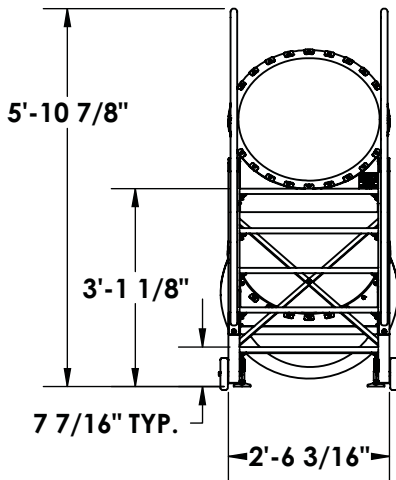
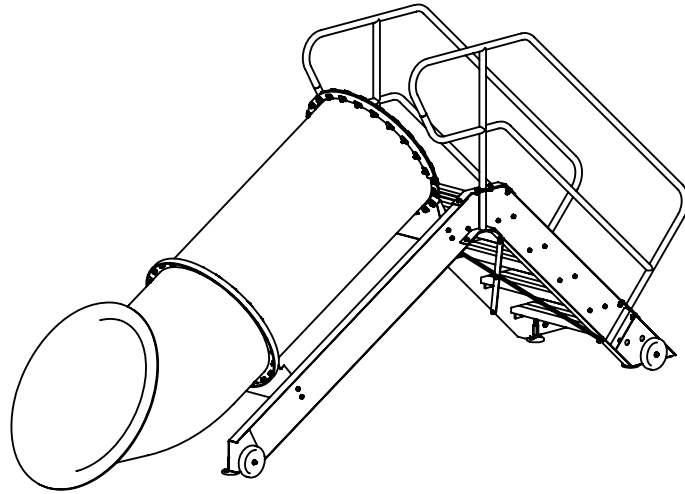


**PLAY TIME SERIES
MODEL - BEAR PAW**



NOTE:

1 DIMENSIONS VARY WITH SPECIFIC APPLICATIONS.
SPECIFICATIONS ARE NOMINAL AND ARE SUBJECT TO CHANGE.
PLEASE CONTACT SPECTUM PRODUCTS FOR CUSTOM APPLICATIONS.



7100 Spectrum Lane
Missoula, Montana 59808
406.542.9781 * 800.791.8056
Fax: 406.542.1158
www.spectrumproducts.com

ENGINEERING DATA

PRODUCT:	BEAR PAW
PRODUCT #:	86510-00
REVISION:	A
MATERIAL:	300 SERIES STAINLESS STEEL

Slide, Bear Paw, part number 86510-00

The slide shall be designed in accordance with ASTM F 1487-01, and CPSC Part 1207, and shall be for use on in-ground commercial swimming pools that have a minimum water depth of 3'. All metallic components of the slide, its frame and stair rails, shall be fabricated of stainless steel. Flume shall be fabricated of color-impregnated, ultraviolet stabilized polyethylene. The slide shall be portable and equipped with transport wheels. The slide shall consist of the following components:

Frame

The slide frame shall be fabricated from 12-gauge, 300 series stainless steel.

Frame Platform Deck and Step Treads

The top platform and step treads shall be fabricated from 1", ultraviolet stabilized, non-slip, structural fiberglass T-bar.

Rails

Stair rails shall be fabricated from 1.25" O.D. x 0.065" wall thickness, 300 series stainless steel, tubing and shall be of the dual horizontal (²H) design.

Wheels

Four, 6" diameter removable polyethylene wheels shall be provided with the slide to facilitate ease of transport.

Flume

The slide flume sections shall be 27" in diameter and shall be rotationally molded of ultraviolet stabilized polyethylene.

Warranty

Two year limited warranty.



7100 Spectrum Lane ~ Missoula, Montana 59808
800.791.8056 ~ 406.542.9781
Fax: 406-542-1158
www.spectrumproducts.com